
Meet Our NICU Team

To contact the Neonatal Intensive Care Unit (NICU) call **216-778-5918**.

For all other neonatology, administrative or fellowship issues call **216-778-5946**

Physicians



John J. Moore, MD

*Professor, Pediatrics and Reproductive Biology, Case Western Reserve University
Head, Division of Neonatology
Attending Neonatologist*



Marc F. Collin, MD

*Associate Professor, Pediatrics, Case Western Reserve University
Medical Director, Neonatal Intensive Care Unit
Attending Neonatologist*

**Deepak Kumar, MD**

*Professor, Pediatrics, Case Western Reserve University
Director, Neonatal Fellowship Program
Attending Neonatologist*

**Maroun J. Mhanna, MD**

*Professor, Pediatrics, Case Western Reserve University
Attending Neonatologist and Pediatric Intensivist*



Prem S Shekhawat, MBBS, M.D., FAAP

*Professor of Pediatrics, Case Western Reserve University
Attending Neonatologist*



Biju Thomas, MBBS, MRCPCH, MS, FAAP

*Assistant Professor of Pediatrics, Case Western Reserve University
Director Pediatric Safety and Quality
Attending Neonatologist*

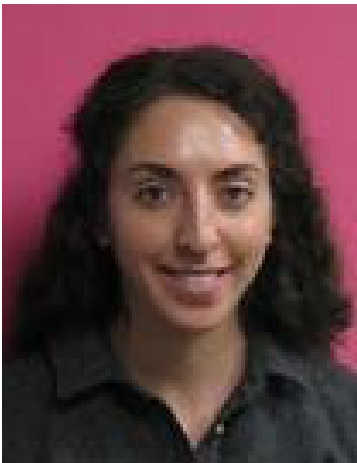
Timur Azhibekov, MD, FAAP

*Assistant Professor of Pediatrics, Case Western Reserve University
Attending Neonatologist*

Neonatal Nutritionists



Sharon Lee Groh-Wargo, PhD, RD, LD
Professor of Pediatrics and Nutrition, Case Western Reserve
University School of Medicine



Stephanie Merlino, MS, RD, LD
Adjunct Lecturer of Nutrition, Case Western Reserve University
School of Medicine

Neonatal Nurse Practitioners



Jennifer White, CNNP

Contact: jwhite@metrohealth.org, 216-778-5918 (Phone), 216-778-1520 (Fax)

Education:

NNP, MS, Ohio State University
BSN Walsh University

Board Certifications: RN, Certified Neonatal Nurse Practitioner
Certifications: CREC, NRP Instructor



Marie McDonnell, CNNP, Clinical Faculty, CWRU School of Nursing

Contact: mmcdonnell@metrohealth.org, 216-778-5918 (Phone), 216-778-1520 (Fax)

Education:

BSN Ursuline College
NNP Certificate Columbus Children's 1994
MSN Case Western Reserve University

Board Certifications: NCC
Certifications: NRP Instructor
Associations: ANN



Sheila Gesing, CNNP, Clinical Faculty, CWRU School of Nursing

Contact: sgesing@metrohealth.org, 216-778-5918 (Phone), 216-778-1520 (Fax)

Education:

MSN University of Akron

Board Certifications: NCC
Certifications: NRP Instructor, BLS
Associations: OAAPN, National Association of Neonatal Nurses, Academy of Neonatal Nurses

**Chanel Ondecker, CNNP**

Contact: condecker@metrohealth.org, 216-778-5918 (Phone), 216-778-1520 (Fax)

Education:

BSN: Ursuline College, Ohio

MSN, NNP: CWRU, Frances Payne Bolton School of Nursing

Board Certifications: NCC

Certifications: NRP Provider, BLS, Ohio Board of Nursing, Certified Neonatal Nurse Practitioner NCC

Associations: National Association of Neonatal Nurses

**Jenna Meredith, CNP, NNP-BC**

Contact: jmeredith@metrohealth.org, 216-778-5918 (Phone), 216-778-1520 (Fax)

Education:

MSN, NNP East Carolina University

BSN Cleveland State University

Board Certifications: RN, NCC

Certifications: NRP Instructor, BLS

Associations: National Association of Neonatal Nursing

**Karla Phipps, CNNP**

Contact: kphipps@metrohealth.org, 216-778-5918 (Phone), 216-778-1520 (Fax)

Education:

BSN and MSN, Case Western Reserve University

Board Certifications: NCC

Certifications: NRP instructor

Associations: NANN, Academy of Neonatal Nurses, Intravenous Nurses Society, National Association of Neonatal Nurse

Practitioners, Treasurer of the local Northern Ohio Association of Neonatal Nurses

**Kristin Foote, RNC, MSN, NNP**

Contact: kfoote@metrohealth.org, 216-778-5918 (Phone), 216-778-1520 (Fax)

Education:

MN/MSN Case Western Reserve University
BS Ohio Wesleyan University

Board Certifications: RN, NCC, Neonatal Nurse Practitioner
Certifications: NRP, BLS

Associations: National Association of Neonatal Nursing

**Julie Zupancic, MSN, NNP**

Contact: jzupancic@metrohealth.org, 216-778-5918 (Phone), 216-778-1520 (Fax)

Education:

NNP
BSN Bowling Green University

Board Certifications: RN, NCC
Certifications: NRP Instructor

**Kristin Smith-Sullivan, CNNP**; Clinical Faculty, CWRU School of Nursing

Contact: ksmith@metrohealth.org, 216-778-5918 (Phone), 216-778-1520 (Fax)

Education:

NNP
BSN Kent State University
MSN Case Western Reserve University

Board Certifications: RN, NCC
Certifications: NRP Instructor, BLS

**Victoria Lister, CNNP**

Contact: vlister@metrohealth.org, 216-778-5918 (Phone), 216-778-1520 (Fax)

Education:

BSN: Mercy College of Northwest Ohio

MSN, NNP: CWRU, Frances Payne Bolton School of Nursing

Board Certifications: NCC

Certifications: NRP Instructor, BLS, Ohio Board of Nursing,

Certified Neonatal Nurse Practitioner NCC

Associations: National Association of Neonatal Nurses

**Ashley N. Traffis, APRN-CNP**

Contact: awill@metrohealth.org, 216-778-5918 (Phone), 216-778-1520 (Fax)

Education:

BSN: Ohio University

MSN, NNP: East Carolina University (North Carolina)

Board Certifications: NCC

Certifications: NRP Instructor, BLS, Ohio Board of Nursing,

Certified Neonatal Nurse Practitioner NCC

Associations: National Association of Neonatal Nurses, Academy of Neonatal Nursing

Nursing Team



Connie Eggleston, RN, BSN, MSN
Nurse Manager, NICU



Paula Jacomin, RN, BSN
Assistant Nurse Manager, NICU



Julie Medas, RN, MSN, APRN
Clinical Nurse Specialist

Administrative Team



Cassandra Smith
Neonatology Fellowship Coordinator

E-mail: rprudhoe@metrohealth.org
Phone: 216-778-5946
Fax: 216-778-3252

NICU Discharge Coordinator



Debbie Lawson, LPN
Coordinator NICU Discharge and Special Care Clinic

E-mail: dlawson@metrohealth.org
Phone: 216-778-3882
Fax: 216-778-3252