

Health Opportunity Partnership Empowerment

The **Institute for H.O.P.E.™** is a catalyst of change for our health, neighborhoods, economy and future.



Shanell Harris, Lead Trauma Recovery Coach



Katie Kurtz (left) Education & Training Coordinator and MarLa Bell (right) Trauma Recovery Coach



Marlon Leek, Trauma Recovery Coach

*Research tells us that about 80% of a person's health depends on factors beyond medical care. That includes exposure to trauma. Here's how the **Institute for H.O.P.E.™** – in particular, the team's Trauma Recovery Coaches – is building a more resilient community.*

At the King Kennedy public housing complex in Cleveland's Central neighborhood, hope comes in short supply. Shanell Harris, a one-time resident of the neighborhood, is committed to changing that.

"Sometimes they don't even know what hope is," says Harris, now a Lead Trauma Recovery Coach from MetroHealth's Center for Health Resilience within the **Institute for H.O.P.E.™** "To me, hope looks like someone listening – someone offering motivation."

Harris started working with the kids at King Kennedy in December of 2020 – not long after many had witnessed the shooting death of a 19-year-old resident by a Cuyahoga Metropolitan Housing Authority police officer. Harris helped the children process the traumatic event, develop appropriate coping skills, connect with community resources and, perhaps most important, plant seeds of hope.

MetroHealth's six Trauma Recovery Coaches, who are stationed in the hospital as well as in the community, are more than just social workers. For survivors of trauma – both physical and emotional – these coaches are partners on a journey of healing.

"Our coaches work with patients to get to the root of their trauma and guide them through it so that it doesn't lead to bigger health issues," says Megen Simpson, Manager, MetroHealth Trauma Recovery Center. "We show up as our whole selves and work to alleviate some of that fear and isolation they might be going through."

For years, researchers have linked the exposure to traumatic experiences – like witnessing violence, living in unsafe neighborhoods, growing up in poverty, experiencing racism and more – to chronic health issues like diabetes, obesity, depression and the like. Individuals served by the recovery coaches and the Center for Health Resilience are also more likely to report experiencing food insecurity, social isolation, intimate partner violence, stress, transportation challenges and other

Continued on page 2

Report to the Community

April through June 2021

Continued from page 1

risks associated with poor health outcomes.

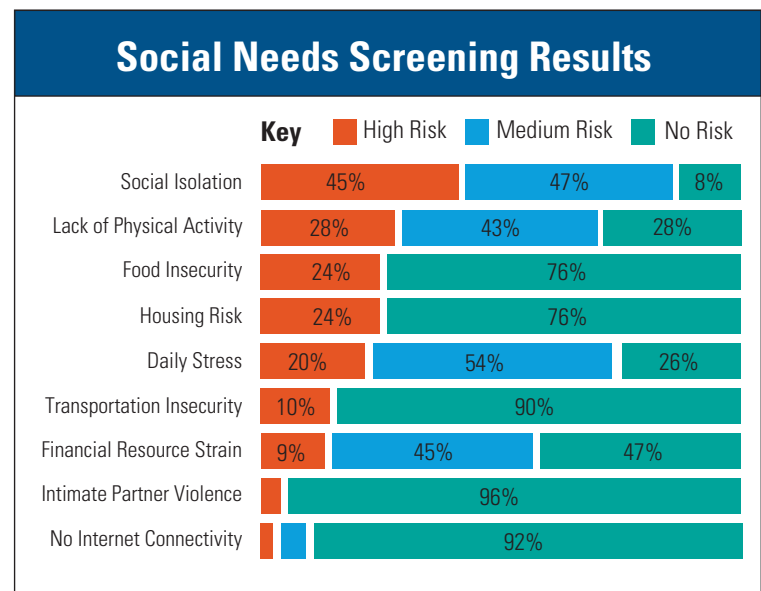
“Trauma can change who you are as an individual,” says Marlon Leek, a Trauma Recovery Coach who spends his days working with hospitalized patients at MetroHealth’s main campus. “So much of what we do is about chipping away at that stigma associated with mental health and positioning our patients to live their healthiest lives.”

So much of the work is focused on building trust, according to MarLa Bell, a MetroHealth coach working at the Rainbow Terrace housing complex in Cleveland’s Kinsman neighborhood. At Rainbow Terrace, Bell has worked with children who experienced violence and with adults struggling with their own mental health. She’s even trained the staff on how trauma can impact an individual and the broader community.

“I did not get through trauma alone and neither can anyone else,” Bell says. “Trauma recovery teams are a necessity for our communities to heal and thrive.”

In fact, trauma grows in isolation. The path toward healing, though, is one nobody should travel alone.

From April 1, 2021 – June 30, 2021, we screened 13,574 patients for social determinants of health, bringing our total to 52,629. With these responses, we’re able to better assess the needs of our patients and connect them with the services that they need to improve their overall health.



Unite Ohio at a glance:

In 2020, MetroHealth partnered with Unite Us to build Unite Ohio – a coordinated care network of health and social care providers. To learn more, visit ohio.uniteus.com.

	January - March	April - June
Community Organizations in the network	72	91
Registered users to make referrals	409	681
Referrals created	991	1,992
Unique individuals served	625	1,313